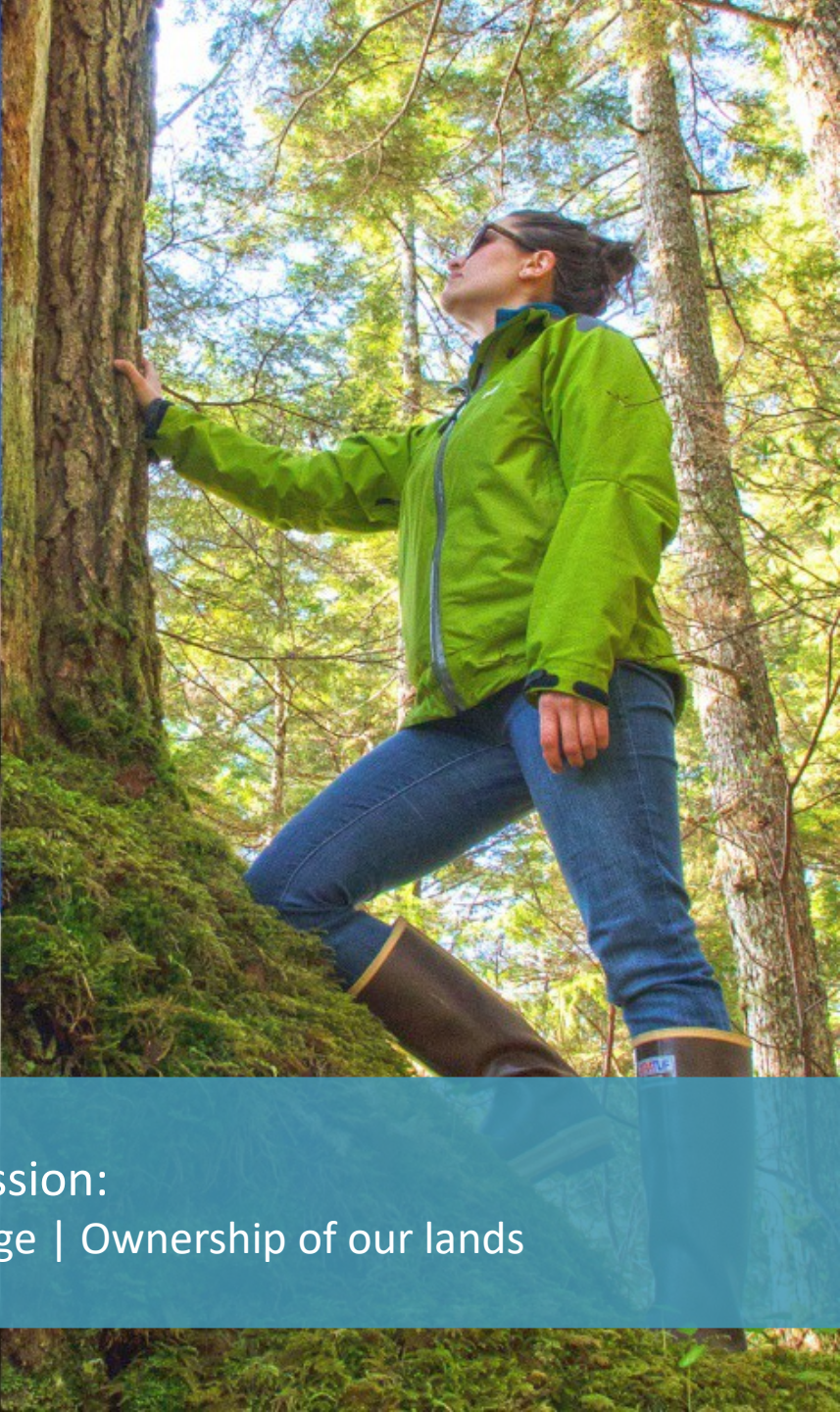
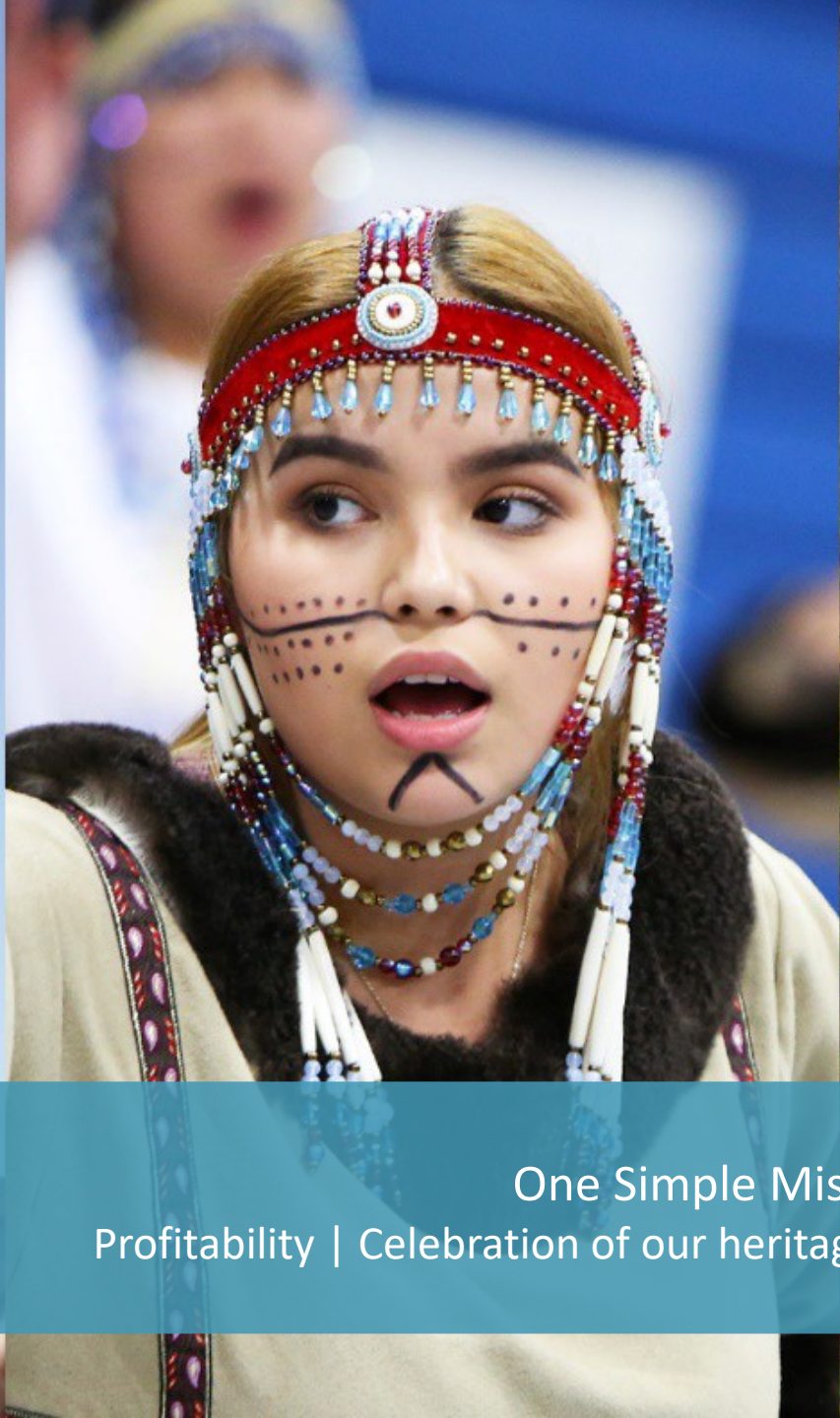


Chugach Government Solutions

Ames Contractor Council
Genevieve Burkett
May 5, 2021





One Simple Mission:
Profitability | Celebration of our heritage | Ownership of our lands



Chukchi Sea

Arctic Slope

NANA

Bering Straits

Doyon

A L A S K A

C A N A D A

Calista

Cook Inlet

Ahtna

Bristol Bay

Chugach

Bering Sea

Gulf of Alaska

Aleut

Koniag

Sealaska



Port Graham
Port Graham Corporation

Nanwalek
English Bay Corporation





Core Behaviors

- We do things the right way
- We create meaningful value
- We empower people
- We build community
- We leave things better than we found them

We do things the right way



- We are in it for the long haul, and are proud of how we deliver services and win work
- We never compromise our integrity, ethics, and safety standards
- We are respectful, honest, and open with each other
- We own up to our mistakes and stand by our commitments

We create meaningful value



- We are a forever company that builds enduring relationships with mutual trust and respect
- We treat our customers as we do our Elders – they always eat first
- We offer fair prices and a best value approach
- We choose customers who see us as valued partners

We empower people



- We believe all our employees are capable of extraordinary things
- We treat employees with respect and dignity
- We provide employees who are committed to reaching their full potential with the opportunities and resources to grow and overcome challenges
- We cultivate leaders at all levels by modeling and



We build community



- We honor our community ownership by making decisions for the collective good
- We embrace the diversity of the Chugach family and our communities
- We are a positive force within our communities and workplaces
- We are committed to the success of our customers



We leave things better than we found them



- We strive for excellence – not the status-quo
- We seek ways to make our workplaces safer and more efficient
- We are passionate about continuously improving our company and each other
- We realize that sometimes the smallest changes can have the greatest impact



- Federal division of Chugach Alaska Corporation
- Supports 2,600 Native Shareholders
- Corporate headquarters in Anchorage, Alaska
- Regional Offices: Huntsville, Alabama; Las Vegas, Nevada; Charleston, South Carolina; Chesapeake, Virginia; and Honolulu, Hawaii
- 5,000+ employees worldwide
- >\$750 million in annual revenue



Chugach's Portfolio

Technical, IT, &
Cyber



Consistently awarded highest ratings from complex IT systems on the front lines of national defense to everyday support

Facilities
Services



Comprehensive services from environmental to base operations support

Construction



30+ years' experience with federal agencies with award-winning construction services

Education



25 years' experience providing Job Corps operations, training, and management services



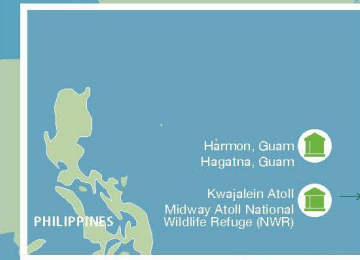
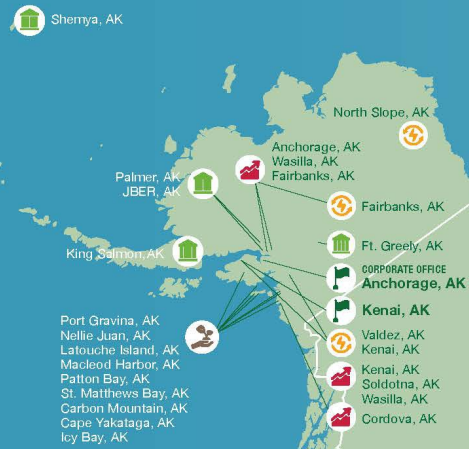
Alaska is our home.
The world is our workplace.

100 Locations

27 States

6 Countries

5k Employees



CHUGACH PROJECT SITE MAP KEY	
	CHUGACH OFFICES
	INVESTMENTS
	FACILITIES SERVICES
	ENERGY SERVICES
	GOVERNMENT SERVICES
	LAND & RESOURCES



Core Capabilities

- Facilities O&M
- Maintenance, Repair, Alteration, and Construction and Real Property Facilities
- Logistics Support
- Utilities, Water, and Wastewater Plants & Infrastructure
- Fuel/Oil Storage and Distribution
- Airfield Operations and Management
- Hospital Maintenance
- Marine and Port Facilities
- Vehicle and Heavy Equipment Maintenance
- Security Services
- Readiness and Disaster Preparedness
- Family Housing Management

Key Customers & Partners

- DoD (DTRA, MDA)
- U.S. Army (IMCOM, AMC, USACE)
- U.S. Navy (NAVFAC)
- U.S. Air Force
- U.S. Marine Corps
- National Aeronautics and Space Administration
- U.S. Fish and Wildlife Service
- Federal Aviation Administration
- Federal Bureau of Investigation
- Lockheed Martin
- Northrop Grumman
- Bechtel
- InDyne, Inc.
- AECOM

Core Capabilities

- Enterprise Network/IT
- Industrial Control Systems/SCADA
- Enterprise O&M and Administrative Services
- Shipboard Systems Integration
- Video Technology
- Engineering Support
- Applications Development
- Data Management and Warehousing
- Technical Training and Support
- EAP/Labor Relations Services
- Cyber Security/Information Assurance
- Support to Foreign Military Sales Cases

Key Customers & Partners

- DoD (Defense Logistics Agency)
- U.S. Army (IMCOM/NETCOM)
- U.S. Navy (Space and Naval Warfare Systems Command)
- U.S. Air Force
- U.S. Marine Corps
- Dept of Homeland Security (U.S. Coast Guard)
- Maryland Procurement Office
- U.S. Patent and Trademark Office

Certifications

- MCSE
- MCSA
- MCP
- MCITP
- MCTS



Construction



Core Capabilities

- General Construction
- Renovation and Tennant Fit-out
- Construction Management
- Vertical/Horizontal Construction
- Design-Build
- Top Secret Clearances to work at sensitive sites
- Man Camp

Certifications & Specialties

- Anti-Terrorism/Force Protection
- SCIF Construction
- Challenging Climates and Locations

Key Customers & Partners

- DoD (MDA, DTRA, CENTCOM)
- U.S. Army (IMCOM, USACE)
- U.S. Army Southern Command
- U.S. Navy
- U.S. Air Force
- General Services Agency
- Dept of Energy
- Dept of State
- U.S. Fish and Wildlife Services
- National Aeronautics and Space Administration
- Lockheed Martin



Education



Core Capabilities

- Curriculum Development
- Technical and Professional Training
- Workforce Development
- Vocational Rehabilitation and Employment
- Classroom or Distance Learning
- Student Recruitment
- Infrastructure and Project Management
- Technical and Administrative Support
- Logistics and Transportation
- Facility and Equipment Maintenance
- Security and Safety
- Quality Assurance

Key Customers & Partners

- Dept of Labor
- Dept of Homeland Security

Current Project Sites

- Alaska Job Corps Center
- Inland Empire Job Corps Center
- Gadsden Job Corps Center
- Paul Simon Job Corps Center
- Springdale Job Corps Center
- Gulfport Job Corps Center
- Job Corps Center Contingency Operator
- FEMA EMI Classroom and Editorial Support

Chugach Companies



Company Name	DUNS No.	Cage Code	Size Status	Primary NAICS Code	POC Email	POC Phone
Chugach Consolidated Solutions, LLC	07-882-7038	6XZF0	8(a)	561720	william.martz@chugachgov.com	(907) 550-7105
Chugach Education Services, Inc.	83-018-5463	5E9U4	Large Business	611519	katherine.carlton@chugachgov.com	(907) 550-4102
Chugach Federal Solutions, Inc.	82-903-0365	59PZ4	Large Business	237110	douglas.taylor@chugachgov.com	(703) 336-0114
Chugach Industries, Inc.	14-212-0745	3PTG3	Large Business	236220	douglas.taylor@chugachgov.com	(703) 336-0114
Chugach Information Technology, Inc.	82-903-0878	59QK3	Large Business	541512	mark.miller@chugacghgov.com	(757) 410-7235
Chugach Intelligence Solutions, LLC	11-749-3659	8LF17	8(a)	561210	william.byrum@chugachgov.com	(907) 395-3912
Chugach Range & Facilities Services JV, LLC	11-708-0900	8BYF8	8(a)	561720	william.martz@chugachgov.com	(907) 550-7105
Chugach Solutions Enterprise, LLC	11-702-8877	8CK53	8(a)	541614	william.rogers@chugachgov.com	(907) 290-1142
Chugach Technical Solutions, LLC	08-036-7978	7PVV2	8(a)	541513	lynwood.crow@chugachgov.com	(540) 735-5297
Chugach Training & Educational Solutions, LLC	07-882-7031	6Y5Q3	8(a)	611430	katherine.carlton@chugachgov.com	(907) 550-4102
Defense Base Services, Inc.	03-165-2150	66JD0	Large Business	238990	william.martz@chugachgov.com	(907) 550-7105
Wolf Creek Federal Services, Inc.	83-024-3197	5EHH6	Large Business	332311	douglas.taylor@chugachgov.com	(703) 336-0114

Questions



Alaska Native values; world-class service

www.chugachgov.com



Genevieve Burkett, Capture Manager

- 907-301-5903
- Genevieve.Burkett@chugachgov.com

3800 Centerpoint Drive, Suite 800

Anchorage, AK 99503

Website: <https://www.chugachgov.com/>

